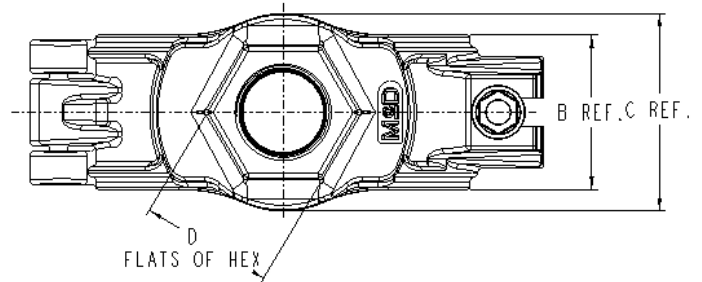


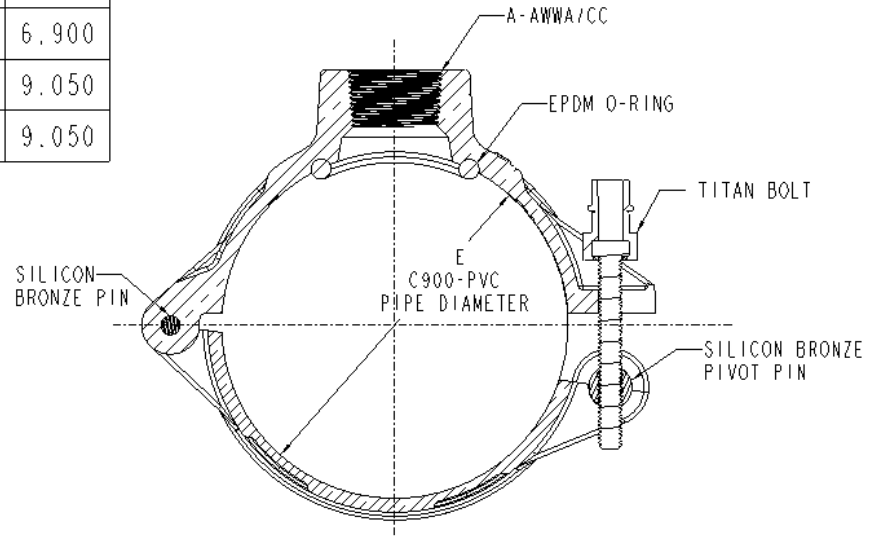
# SUBMITTAL DATA SHEET

## Swing Connect Hinged Saddle - 3897

C900 PVC x AWWA/CC



MODEL	SIZE	A	B	C	D	E
3897	4X3/4	3/4	2.00	2.56	1.69	4.800
3897	4X1	1	2.00	2.56	1.69	4.800
3897	6X3/4	3/4	2.00	2.56	1.69	6.900
3897	6X1	1	2.00	2.56	1.69	6.900
3897	8X3/4	3/4	2.00	2.56	1.69	9.050
3897	8X1	1	2.00	2.56	1.69	9.050



### SUBMITTAL INFORMATION

- Manufactured in compliance with ANSI/AWWA C800 (latest revision)
- Brass components conform to ASTM B62 and ASTM B584, UNS C83600 -85-5-5-5 (latest revision)
- Certified to NSF/ANSI 61
- Silicon Bronze hinge pin and bolt(s)
- EPDM o-ring
- Pipe and tap size, and thread type identified on saddle
- Outlet boss with large wrench flats



**A.Y. McDonald Mfg. CO.**  
4800 Chavenelle Rd  
Dubuque, IA 52002

**Toll Free: 1-800-292-2737**  
sales@aymcdonald.com  
[aymcdonald.com](http://aymcdonald.com)

A.Y. McDonald considers the information on this assembly drawing correct when published. Item and option availability, including specifications, are subject to change without notice.

**Submitted by:**