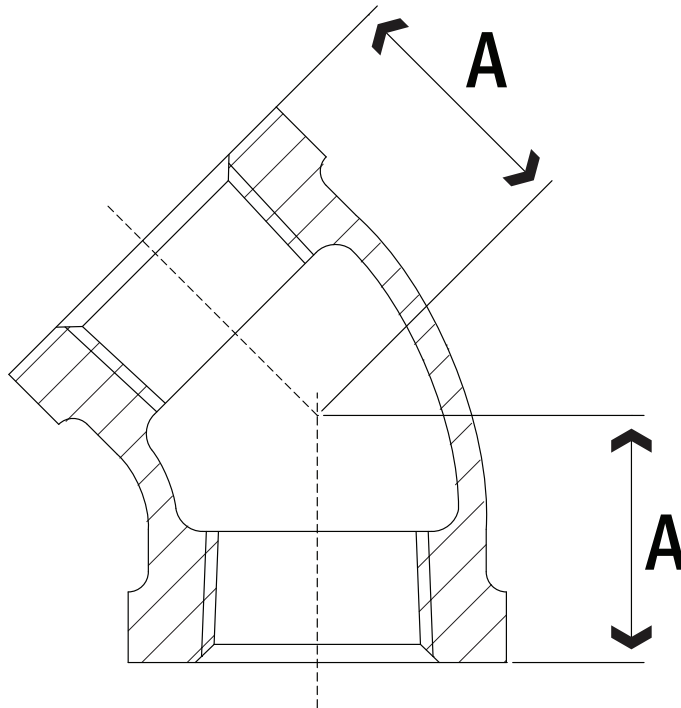


SUBMITTAL DATA SHEET

125LB Threaded Bronze Pipe Fittings
45° Bronze Elbow - 2245



A.Y. McDonald Mfg. Co. Pipe Fittings & Nipples are constructed from heavy duty bronze and are rated for commercial, industrial and residential applications up to 125 WOG. Threads conform to ANSI B1.20.1 and fitting dimensions comply with ANSI B16.15.



Dimensions

Part No.	Model No.	Size	A	Ctn Qty	Wt.
4422-040	2245	1/2"	0.79"	5	0.20
4422-041	2245	3/4"	0.91"	5	0.30
4422-042	2245	1"	1.06"	5	0.50
4422-043	2245	1 1/4"	1.22"	5	0.75
4422-044	2245	1 1/2"	1.30"	5	1.10
4422-045	2245	2"	1.46"	5	1.71

SUBMITTAL INFORMATION

- **Materials**
C89833, AWWA C800, ASTM B584
- **Fitting Dimensions**
ANSI B 16.15, Class 125

- **Union Dimensions**
WWW-U-516-B
- **Threads**
ANSI / ASME B1.20.1



Non-Potable Use
Only



A.Y. McDonald Mfg. Co.
4800 Chavenelle Rd
Dubuque, IA 52002

Toll Free: 1-800-292-2737
sales@aymcdonald.com
aymcdonald.com

A.Y. McDonald considers the information on this assembly drawing correct when published. Item and option availability, including specifications, are subject to change without notice.

Submitted by: