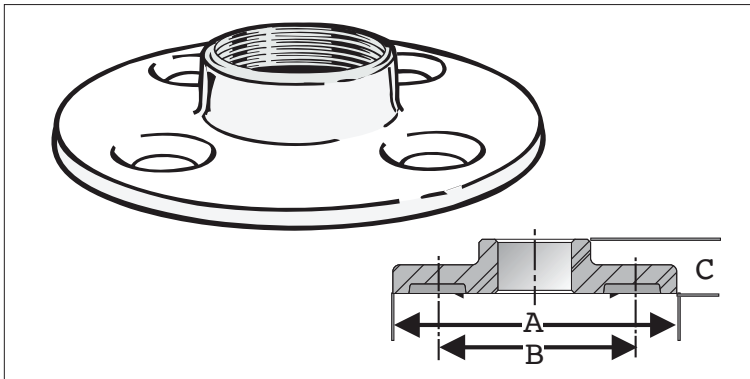


SUBMITTAL DATA SHEET

No-Lead Domestic Standard Threaded Flange - 72215D



A.Y. McDonald Mfg. Co. No-Lead Domestic Pipe Fittings are constructed from heavy duty bronze and are rated for commercial, industrial and residential applications up to 125 WOG.



Dimensions

Part No.	Model No.	Size	A	B	C
5429-143	72215D	3/4"	3.88	2.76	0.62
5429-144	72215D	1"	4.25	3.13	0.69
5429-145	72215D	1 1/4"	4.63	3.54	0.81
5429-146	72215D	1 1/2"	5.04	3.88	0.88
5429-147	72215D	2"	5.94	4.74	1.00
5429-149	72215D	3"	7.56	6.00	1.19
5429-151	72215D	4"	9.09	7.50	1.31



SUBMITTAL INFORMATION

- Sizes Available: 1/2" - 3"
- **Materials**
C89833, AWWA C800, ASTM B584
- **Fitting Dimensions**
ANSI B16.15, Class 125
- **Union Dimensions**
WWW-U-516-B
- **Threads**
ANSI/ASME B1.20.1

NO-LEAD: The weighted average of the wetted surface of this no-lead product contacted by consumable water contains less than one quarter of one percent (0.25%) lead.



A.Y. McDonald Mfg. Co.
4800 Chavenelle Rd
Dubuque, IA 52002

Toll Free: 1-800-292-2737
sales@aymcdonald.com
aymcdonald.com

A.Y. McDonald considers the information on this assembly drawing correct when published. Item and option availability, including specifications, are subject to change without notice.

Submitted by: