

# SUBMITTAL DATA SHEET

Curb Boxes - 5661

Stationary Rod & Clamp Assembly

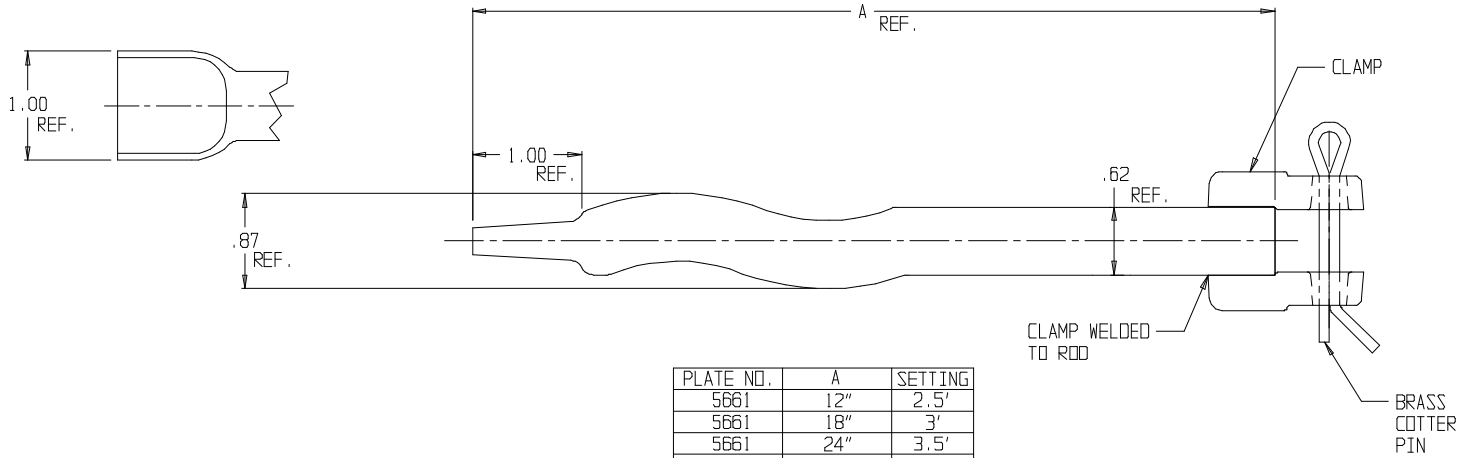


PLATE NO.	A	SETTING
5661	12"	2.5'
5661	18"	3'
5661	24"	3.5'
5661	30"	4'
5661	36"	4.5'
5661	42"	5'
5661	48"	5.5'
5661	54"	6'
5661	60"	6.5'
5661	66"	7'
5661	72"	7.5'
5661	78"	8'
5661	79"	9'
5661	90"	10'

## SUBMITTAL INFORMATION

- Clamp made of Cast Iron per ASTM A48, Class 25
- Coated with black dip



**A.Y. McDonald Mfg. Co.**  
4800 Chavenelle Rd  
Dubuque, IA 52002

**Toll Free: 1-800-292-2737**  
[sales@aymcdonald.com](mailto:sales@aymcdonald.com)  
[aymcdonald.com](http://aymcdonald.com)

A.Y. McDonald considers the information on this assembly drawing correct when published. Item and option availability, including specifications, are subject to change without notice.

**Submitted by:**