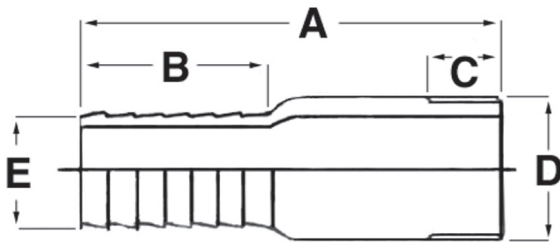


# SUBMITTAL DATA SHEET

Galvanized Insert Fittings – No-Lead  
2097 & 2098



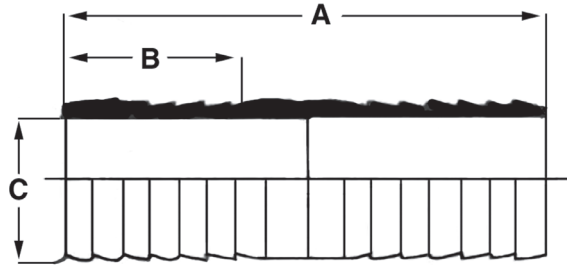
2097  
Galvanized Male Adapter - No-Lead  
Insert x MNPT



**Dimensions**

Size	A	B	C	D	E
1/2"	3.03	1.46	.59	.83	.65
3/4"	3.07	1.46	.59	1.04	.85
1"	3.27	1.46	.75	1.30	.96
1 1/4"	3.62	1.73	.75	1.64	1.41
1 1/2"	3.86	1.73	.87	1.88	1.65
2"	4.21	1.97	.87	2.35	2.11

2098  
Galvanized Insert Coupling - No-Lead  
Insert x Insert



**Dimensions**

Size	A	B	C
1/2"	3.15	1.46	.67
3/4"	3.22	1.46	.87
1"	3.31	1.46	1.09
1 1/4"	3.54	1.73	1.43
1 1/2"	4.01	1.73	1.66
2"	4.21	1.97	2.13

**SUBMITTAL INFORMATION**

- Galvanized Insert fittings are rated to 125 psi cold working pressure.

NO-LEAD: The weighted average of the wetted surface of this no-lead product contacted by consumable water contains less than one quarter of one percent (0.25%) lead.



A.Y. McDonald Mfg. Co.  
4800 Chavenelle Rd  
Dubuque, IA 52002

Toll Free: 1-800-292-2737  
sales@aymcdonald.com  
aymcdonald.com

A.Y. McDonald considers the information on this assembly drawing correct when published. Item and option availability, including specifications, are subject to change without notice.

Submitted by: