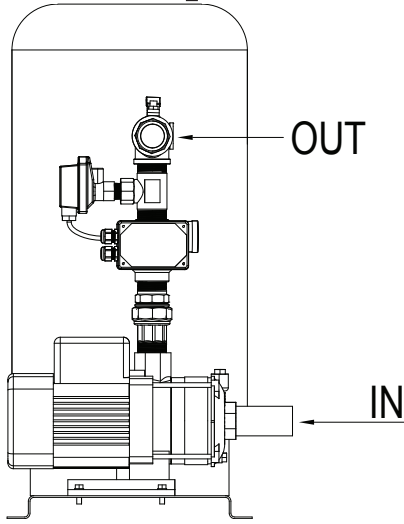


# STOP

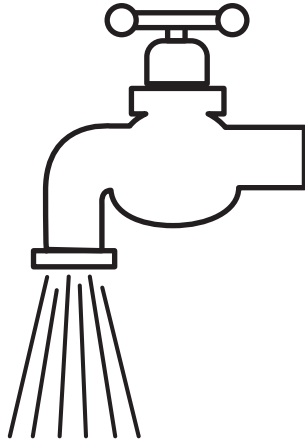


# DuraMAC™ Water Pressure Booster System Quick Start Guide

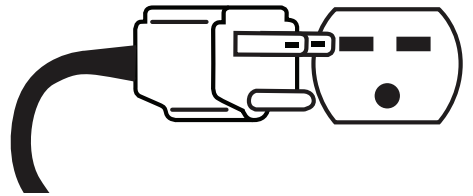
## 1 Pipe



## Purge

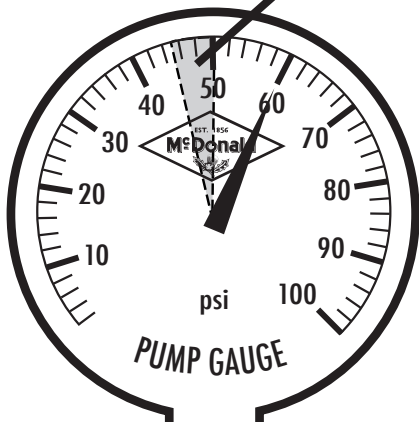


## Plug

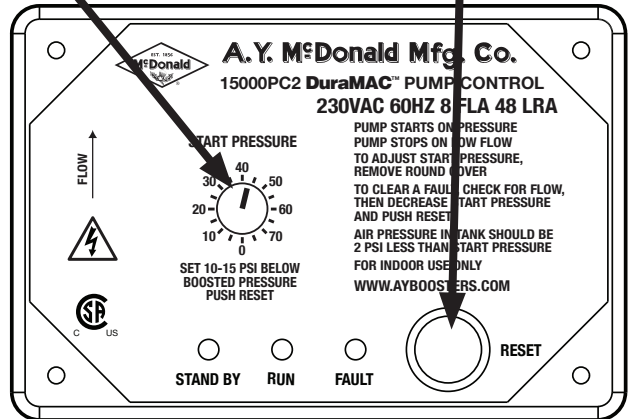


## 2 Look

SET DIAL  
10-15 PSI  
BELOW  
MAX  
BOOSTED  
PRESSURE

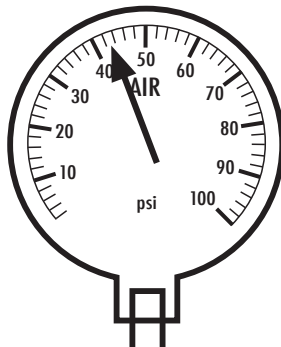


## Set



## Push

## 3 Air Pressure



2 PSI LESS THAN  
START PRESSURE  
DIAL SETTING

**BE SURE  
WATER PRESSURE  
IS AT 0 WHEN  
SETTING TANK**

3210-490 3/22



**!** **WARNING:** It is unlawful in CALIFORNIA & VERMONT (effective 1/1/2010); MARYLAND (effective 1/1/2012); LOUISIANA (effective 1/1/2013) and the UNITED STATES OF AMERICA (effective 1/4/2014) to use any product in the installation or repair of any public water system or any plumbing in a facility or system that provides water for human consumption if the wetted surface area of the product has a weighted average lead content greater than 0.25%. This prohibition does not extend to service saddles used in California, Louisiana or under USA Public Law 111-380.