

# STOP

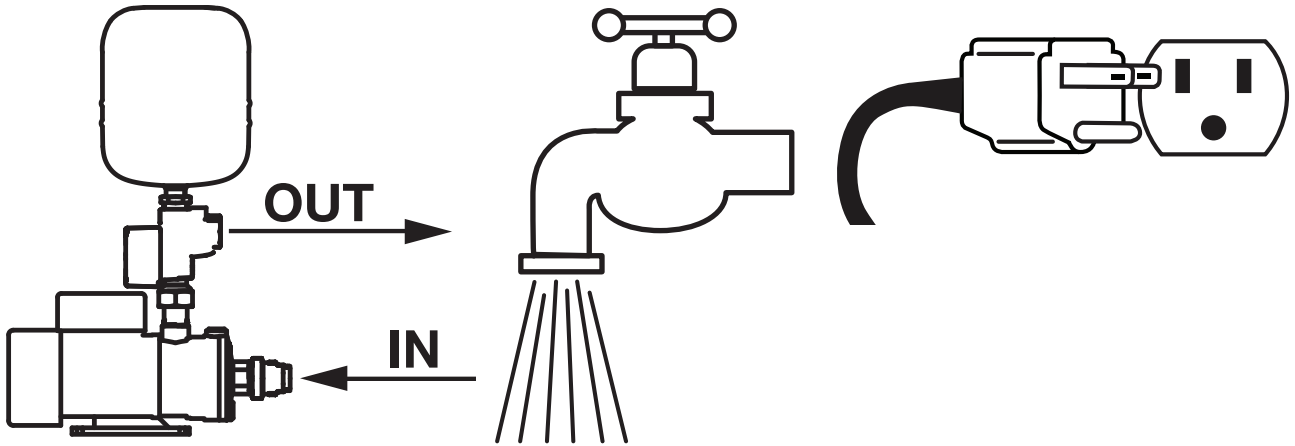


## DuraMAC™ Water Pressure Booster System Quick Start Guide

### 1 Pipe

### Purge

### Plug



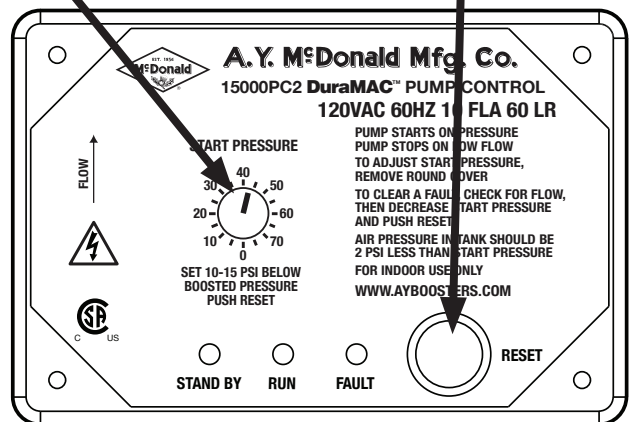
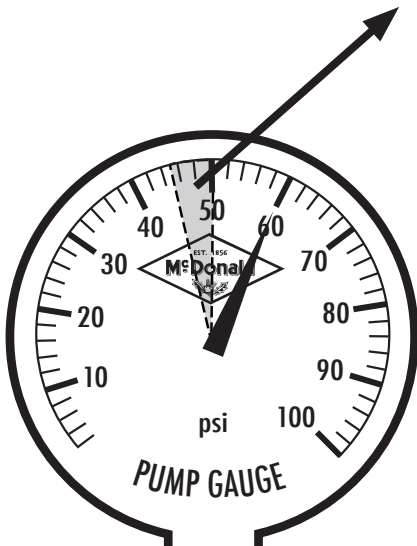
### 2

### Look

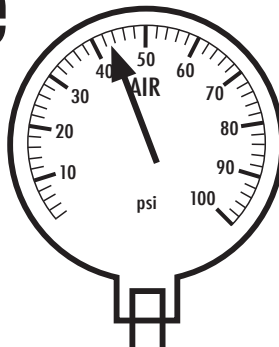
### Set

### Push

SET DIAL  
10-15 PSI  
BELOW  
MAX  
BOOSTED  
PRESSURE



### 3 Air Pressure



2 PSI LESS THAN  
START PRESSURE  
DIAL SETTING

**BE SURE  
WATER PRESSURE  
IS AT 0 WHEN  
SETTING TANK**

3210-473 3/22



**WARNING:** It is unlawful in CALIFORNIA & VERMONT (effective 1/1/2010); MARYLAND (effective 1/1/2012); LOUISIANA (effective 1/1/2013) and the UNITED STATES OF AMERICA (effective 1/4/2014) to use any product in the installation or repair of any public water system or any plumbing in a facility or system that provides water for human consumption if the wetted surface area of the product has a weighted average lead content greater than 0.25%. This prohibition does not extend to service saddles used in California, Louisiana or under USA Public Law 111-380.