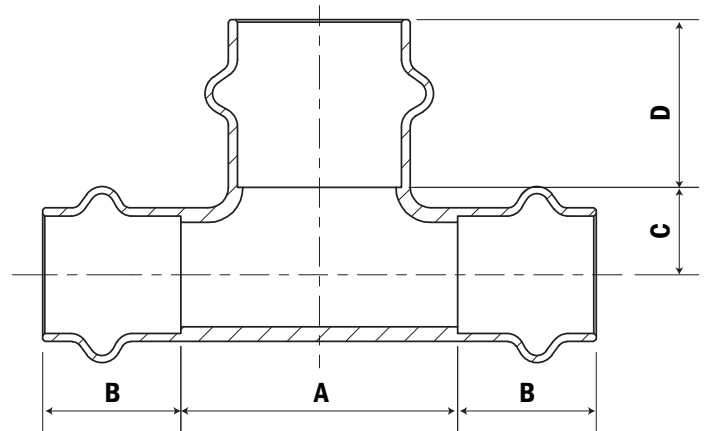
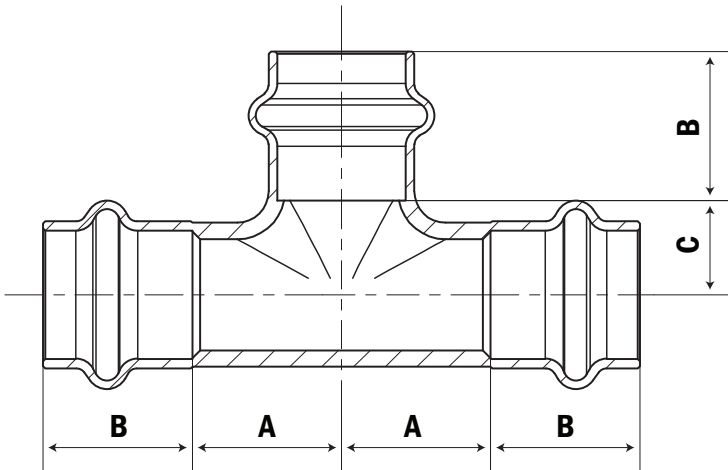


SUBMITTAL DATA SHEET

No-Lead Press Fit
Tee – 71930

Press Fit x Press Fit x Press Fit



Dimensions

Model No.	Size	A	B	C	Weight (Oz)	Ctn Qty	Mtr Qty
71930	1/2"	0.75"	0.866"	0.472"	3.06	10	200
71930	3/4"	0.866"	0.905"	0.629"	5.04	10	100
71930	1"	0.944"	0.944"	0.787"	7.58	5	50
71930	1 1/4"	1.024"	1.024"	0.866"	10.33	1	25
71930	1 1/2"	1.141"	1.417"	1.411"	15.80	1	20
71930	2"	1.377"	1.575"	1.377"	24.9	1	10

Dimensions

Model No.	Size	A	B	C	D	Weight (Oz)	Ctn Qty	Mtr Qty
71930	1/2" x 3/4"	1.81"	0.86"	0.47"	0.91"	4.47	10	120
71930	3/4" x 1"	2.00"	0.91"	0.63"	0.95"	6.77	5	50

SUBMITTAL INFORMATION

- Patented leak detection technology allows for excellent visual indication of non-pressed joints prior to testing
- Compatible with multiple Press Fit tools for 2" and under
- EPDM O-ring
- Designed for hydrostatic water pressure up to 230 PSI (16 bar)
- Designed for temperature range of -4°F to 200°F
- Press Fit fittings are suitable with ASTM B88 K, L, & M hard or soft copper tube
- IAMPO PS 117 - 2012 ael / TiL-MSE-13 C2003
- Section 1417 (d) of the Safe Drinking Water Act
- ANSI/NSF 61-G, ANSI/NSF 372



NO-LEAD: The weighted average of the wetted surface of this no-lead product contacted by consumable water contains less than one quarter of one percent (0.25%) lead.



A.Y. McDonald Mfg. Co.
4800 Chavenelle Rd
Dubuque, IA 52002

Toll Free: 1-800-292-2737
sales@aymcdonald.com
aymcdonald.com

A.Y. McDonald considers the information on this assembly drawing correct when published. Item and option availability, including specifications, are subject to change without notice.

Submitted by: