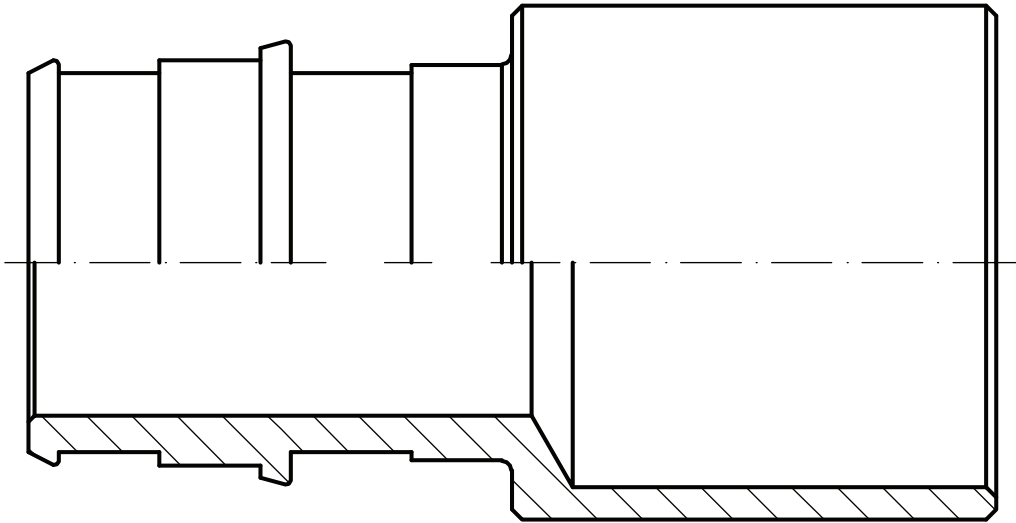
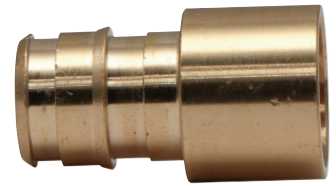


SUBMITTAL DATA SHEET

No-Lead
Brass Expansion Pex Female Adapter - 72300EXSF

Expansion Pex x Female Sweat



SUBMITTAL INFORMATION

- Available Sizes: 1/2", 1/2" x 3/4", 3/4", and 1"
- **Pressure Rating:** 150 PSI
- **Material:** C46500
- Pex end conforms to ASTM F1960



NO-LEAD: The weighted average of the wetted surface of this no-lead product contacted by consumable water contains less than one quarter of one percent (0.25%) lead.



A.Y. McDonald Mfg. Co.
4800 Chavenelle Rd
Dubuque, IA 52002

Toll Free: 1-800-292-2737
sales@aymcdonald.com
aymcdonald.com

A.Y. McDonald considers the information on this assembly drawing correct when published. Item and option availability, including specifications, are subject to change without notice.

Submitted by: