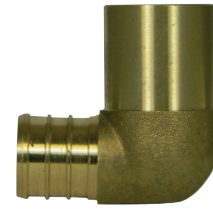


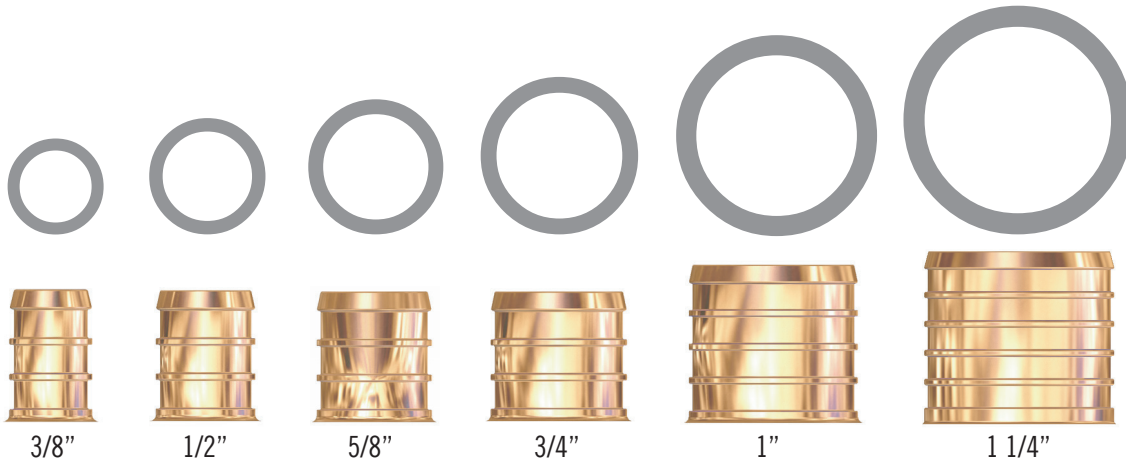
SUBMITTAL DATA SHEET

No-Lead
Brass Pex 90° Male Adapter Elbow - 72392M

Pex x Male Sweat



Pipe Size	3/8"	1/2"	5/8"	3/4"	1"	1 1/4"
Actual O.D.	1/2"	5/8"	3/4"	7/8"	1 1/8"	1 3/8"



3/8"

1/2"

5/8"

3/4"

1"

1 1/4"

SUBMITTAL INFORMATION

- **Pressure Rating:** 150 PSI
- **Material:** Forged No-Lead Brass (C69300)
- Pex end conforms to ASTM F1807
- **Use with:** Pex tubing in accordance with ASTM F876 & F877
- Complies with NSF/ANSI 61-2012
- **Typical Applications:** Potable code and hot domestic water, hydronic heating systems and radiant heating systems



NO-LEAD: The weighted average of the wetted surface of this no-lead product contacted by consumable water contains less than one quarter of one percent (0.25%) lead.



A.Y. McDonald Mfg. Co.
4800 Chavenelle Rd
Dubuque, IA 52002

Toll Free: 1-800-292-2737
sales@aymcdonald.com
aymcdonald.com

A.Y. McDonald considers the information on this assembly drawing correct when published. Item and option availability, including specifications, are subject to change without notice.

Submitted by: