

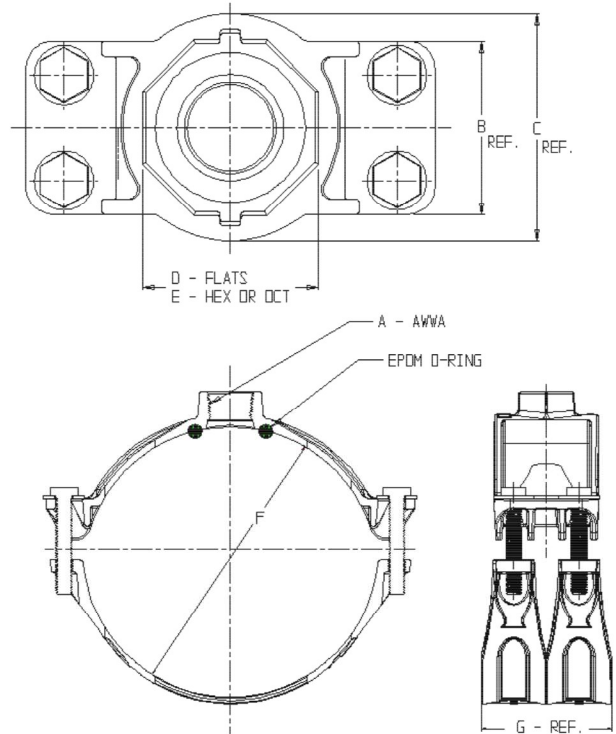
SUBMITTAL DATA SHEET

Brass Double Strap Saddle - 3809

C900 PVC x AWWA



MODEL	SIZE	A	B	C	D	E	F	G	PVC TYPE
3809	4 X 3/4	3/4	3.19	3.19	1.69	HEX	4.80	4.00	C900
3809	4 X 1	1	3.19	3.19	1.69	HEX	4.80	4.00	C900
3809	4 X 1 1/2	1 1/2	3.19	4.19	3.10	DCT	4.80	4.00	C900
3809	4 X 2	2	3.19	4.19	3.10	DCT	4.80	4.00	C900
3809	6 X 3/4	3/4	3.19	3.19	1.69	HEX	6.90	4.00	C900
3809	6 X 1	1	3.19	3.19	1.69	HEX	6.90	4.00	C900
3809	6 X 1 1/2	1 1/2	3.19	4.19	3.10	DCT	6.90	4.00	C900
3809	6 X 2	2	3.19	4.19	3.10	DCT	6.90	4.00	C900
3809	8 X 3/4	3/4	3.19	3.19	1.69	HEX	9.05	4.00	C900
3809	8 X 1	1	3.19	3.19	1.69	HEX	9.05	4.00	C900
3809	8 X 1 1/2	1 1/2	3.19	4.19	3.10	DCT	9.05	4.00	C900
3809	8 X 2	2	3.19	4.19	3.10	DCT	9.05	4.00	C900
3809	12 X 3/4	3/4	3.19	3.19	1.69	HEX	13.20	4.00	C900
3809	12 X 1	1	3.19	3.19	1.69	HEX	13.20	4.00	C900
3809	12 X 1 1/2	1 1/2	3.19	4.19	3.10	DCT	13.20	4.00	C900
3809	12 X 2	2	3.19	4.19	3.10	DCT	13.20	4.00	C900



** ALL 85 BRASS STRAP. TWO STRAPS PER ASSEMBLY.

DRAWING MAY NOT RESEMBLE
ACTUAL SADDLE CONFIGURATION

SUBMITTAL INFORMATION

- Manufactured in compliance with ANSI/AWWA C800 (latest revision)
- Brass components conform to ASTM B62 and ASTM B584, UNS C83600 -85-5-5-5 (latest revision)
- Certified to NSF/ANSI 61
- Silicon Bronze bolts sized 1/2 - 13
- EPDM o-ring
- Pipe and tap size, and thread type identified on saddle
- Outlet boss with large wrench flats



A.Y. McDonald Mfg. CO.
4800 Chavenelle Rd
Dubuque, IA 52002

Toll Free: 1-800-292-2737
sales@aymcdonald.com
aymcdonald.com

A.Y. McDonald considers the information on this assembly drawing correct when published. Item and option availability, including specifications, are subject to change without notice.

Submitted by: