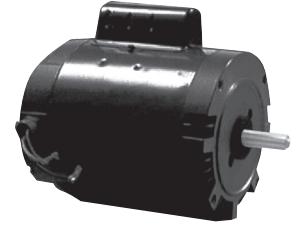


SUBMITTAL DATA SHEET

Pump Repair Parts

Superbooster Motors



NEMA C (Keyed shaft) Motor | Single Phase, Open Drip Proof (ODP) | Capacitor Start

Nema C Motor

Two Compartments Products | E-Z Access

Part No.	HP	Volts	Wt.
6903-280	1/2	115/230	19
6903-281	3/4	230/115	23
6903-282	1	230/115	24
6903-283	1 1/2	230/115	31
6903-284	2	230	31

Repair Gauge Kit

Use for alignment when assembling motor and pump end back together.

Part No.	Model No.
6903-041	27000KIT

*Service Factor Amps. may vary with motor manufacturer - refer to label on motor

(1) Length not including shaft

(2) Contact factory for three phase and/or TEFC motors

NO-LEAD: The weighted average of the wetted surface of this no-lead product contacted by consumable water contains less than one quarter of one percent (0.25%) lead.



A.Y. McDonald Mfg. Co.
4800 Chavenelle Rd
Dubuque, IA 52002

Toll Free: 1-800-292-2737
sales@aymcdonald.com
aymcdonald.com

A.Y. McDonald considers the information on this assembly drawing correct when published. Item and option availability, including specifications, are subject to change without notice.

Submitted by: