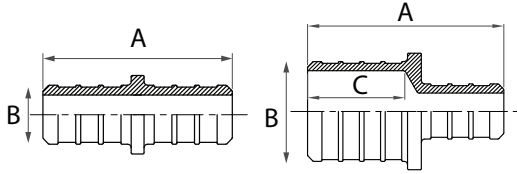


SUBMITTAL DATA SHEET

No-Lead Poly Pex



2400 - Coupling - Poly (Pex x Pex)

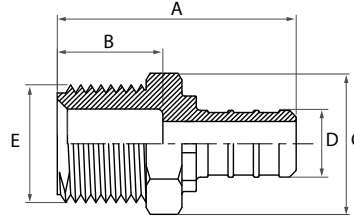


Dimensions

Size	A	B	C
3/8"	1.5	0.6	0.8
1/2"	1.5	0.6	0.8
1/2" x 3/8"	1.5	0.6	0.7
3/4"	1.5	0.8	0.8
3/4" x 1/2"	1.5	0.8	0.7
1"	1.8	1.0	0.9
1" x 1/2"	1.7	1.0	0.8
1" x 3/4"	1.7	1.0	0.9



2400M - Male Adapter - Poly (Pex x MNPT)

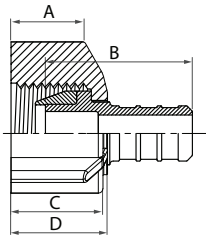


Dimensions

Size	A	B	C	D	E
1/2"	1.7	0.7	0.9	0.5	1/2" NPT
1/2" x 3/4"	1.7	0.8	1.0	0.5	3/4" NPT
3/4"	1.7		1.0		3/4" NPT
3/4" x 1/2"	1.7		1.0	0.7	1/2" NPT
1"	1.9	0.9	1.3		1" NPT



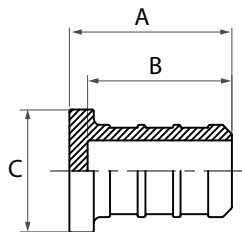
2400F - Female Adapter - Poly (Pex x FNPT)



Dimensions

Size	A	B	C	D
1/2"	0.6	1.3	0.8	0.8

2402 - Plug - Poly



Dimensions

Size	A	B	C
3/8"	0.8	0.7	0.6
1/2"	0.8	0.7	0.6
3/4"	0.8	0.7	0.8
1"	1.0	0.9	1.0

SUBMITTAL INFORMATION

- NSF 61 & NSF 372
- Temperature Rating is 180°F at 100 PSI
- Pex ends conform to ASTM F2159
- Material Makeup is PPSU (Polyphenylsulfone)



A.Y. McDonald Mfg. Co.
 4800 Chavenelle Rd
 Dubuque, IA 52002

Toll Free: 1-800-292-2737
 sales@aymcdonald.com
 aymcdonald.com

A.Y. McDonald considers the information on this assembly drawing correct when published. Item and option availability, including specifications, are subject to change without notice.

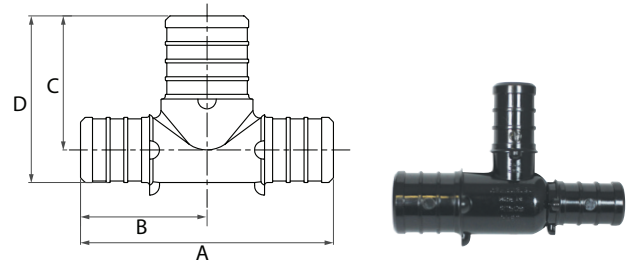
Submitted by:

SUBMITTAL DATA SHEET

No-Lead Poly Pex



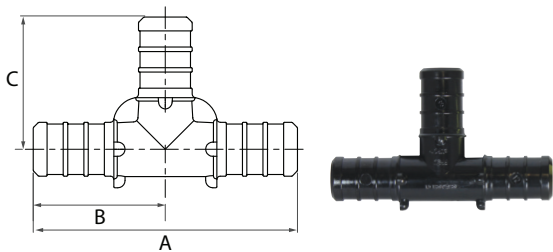
2430 - Reducing Tee - Poly (Pex x Pex x Pex)



Dimensions

Size	A	B	C	D
1/2" x 3/4"	2.5	1.3	1.2	1.4
3/4" x 1/2" x 1/2"	2.4	1.2	1.3	1.6
3/4" x 1/2" x 3/4"	2.5	1.3	1.3	1.6
3/4" x 1/2"	2.3	1.2	1.2	1.5
3/4" x 1"	2.6	1.3	1.4	1.7
1" x 1/2"	2.7	1.3	1.3	
1" x 3/4"	2.7	1.3	1.3	
1" x 3/4" x 3/4"	2.7	1.3	1.3	
1" x 3/4" x 1"	2.8	1.5	1.5	

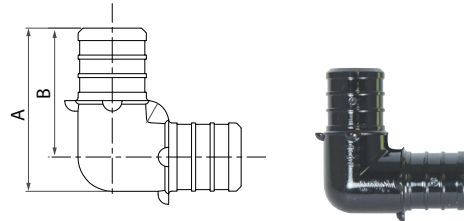
2430 - Tee - Poly (Pex x Pex x Pex)



Dimensions

Size	A	B	C
3/8"	2.2	1.1	1.1
1/2"	2.3	1.2	1.2
3/4"	2.5	1.3	1.3
1"	3.1	1.5	1.5

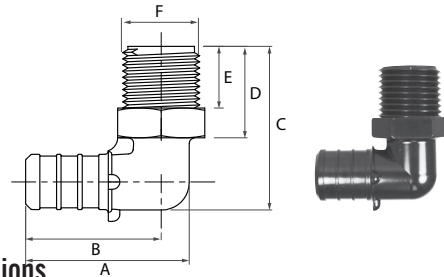
2490 - Elbow - Poly (Pex x Pex)



Dimensions

Size	A	B
3/8"	1.3	1.1
1/2"	1.4	1.2
3/4"	1.6	1.3
3/4" x 1/2"	1.4	1.2
1"	2.0	1.5

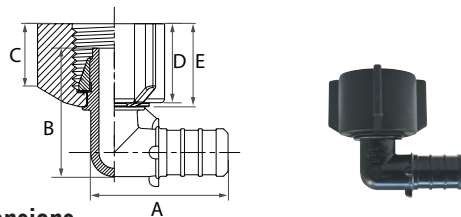
2490M - Male Adapter Elbow - Poly (Pex x MNPT)



Dimensions

Size	A	B	C	D	E	F
1/2"	1.6	1.3	1.5	0.9	0.6	1/2" NPT
1/2" x 3/8"	1.4	1.2	1.4	0.8	0.5	3/8" NPT
3/4"	1.6	1.3	1.7	0.9		3/4" NPT
3/4" x 1/2"	1.5	1.2	1.7	0.9	0.6	1/2" NPT

2492 - Swivel Elbow - Poly (Pex x FNPT)



Dimensions

Size	A	B	C	D	E
1/2"	1.4	1.3	0.6	0.8	0.8



A.Y. McDonald Mfg. Co.
4800 Chavenelle Rd
Dubuque, IA 52002

Toll Free: 1-800-292-2737
sales@aymcdonald.com
aymcdonald.com

A.Y. McDonald considers the information on this assembly drawing correct when published. Item and option availability, including specifications, are subject to change without notice.

Submitted by: