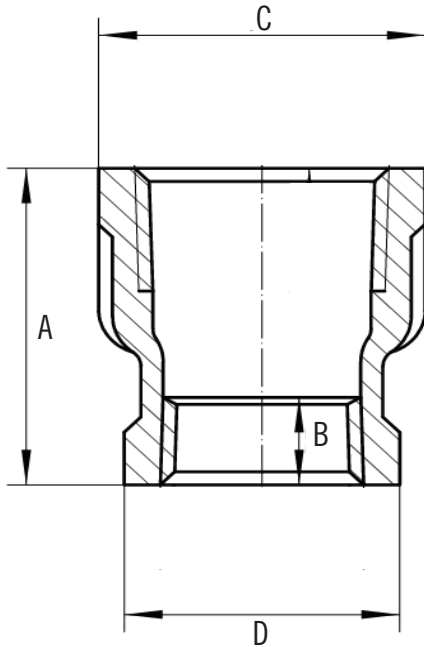


# SUBMITTAL DATA SHEET

## Stainless-Steel Threaded Fitting Reducing Coupling – 2210SS



A.Y. McDonald Mfg. Co. Pipe Fittings are constructed from 304 stainless-steel and are rated for commercial, industrial and residential applications up to 150 PSI. Threads conform to MSS-SP114 standards and specifications.



Part No.	Model No.	Size	Dim. A	Dim. B	Dim. C	Dim. D	Carton Qty	Weight Per Pcs.
4428-108	2210SS	1/4" x 1/8"	1.00	.32	.84	.75	100	.06
4428-109	2210SS	3/8" x 1/8"	1.12	.36	1.01	.75	50	.09
4428-110	2210SS	3/8" x 1/4"	1.12	.36	1.01	.84	50	.09
4428-112	2210SS	1/2" x 1/4"	1.38	.43	1.20	.84	30	.15
4428-113	2210SS	1/2" x 3/8"	1.38	.43	1.20	1.01	30	.17
4428-115	2210SS	3/4" x 1/4"	1.50	.50	1.46	.84	20	.22
4428-116	2210SS	3/4" x 3/8"	1.50	.50	1.46	1.01	20	.23
4428-117	2210SS	3/4" x 1/2"	1.50	.50	1.46	1.20	10	.25
4428-118	2210SS	1" x 1/8"	1.62	.58	1.77	.75	10	.32
4428-119	2210SS	1" x 1/4"	1.62	.58	1.77	.84	10	.32
4428-120	2210SS	1" x 3/8"	1.62	.58	1.77	1.01	10	.35
4428-121	2210SS	1" x 1/2"	1.62	.58	1.77	1.20	10	.36
4428-122	2210SS	1" x 3/4"	1.62	.58	1.77	1.46	10	.40
4428-124	2210SS	1 1/4" x 1/2"	2.00	.67	2.15	1.20	10	.55
4428-125	2210SS	1 1/4" x 3/4"	2.00	.67	2.15	1.46	10	.59
4428-126	2210SS	1 1/4" x 1"	2.00	.67	2.15	1.77	5	.63
4428-128	2210SS	1 1/2" x 1/2"	2.12	.70	2.43	1.20	5	.68
4428-129	2210SS	1 1/2" x 3/4"	2.12	.70	2.43	1.46	4	.71
4428-130	2210SS	1 1/2" x 1"	2.12	.70	2.43	1.77	4	.76
4428-131	2210SS	1 1/2" x 1 1/4"	2.12	.70	2.43	2.15	10	.83
4428-132	2210SS	2" x 1/2"	2.50	.75	2.96	1.20	2	1.04
4428-133	2210SS	2" x 3/4"	2.50	.75	2.96	1.46	2	1.07
4428-134	2210SS	2" x 1"	2.50	.75	2.96	1.77	2	1.15
4428-135	2210SS	2" x 1 1/4"	2.50	.75	2.96	2.15	2	1.24
4428-136	2210SS	2" x 1 1/2"	2.50	.75	2.96	2.43	5	1.27
4428-140	2210SS	2 1/2" x 2"	3.25	.92	3.39	2.96	5	2.17
4428-144	2210SS	3" x 2"	3.68	.98	4.00	2.96	3	2.95

### SUBMITTAL INFORMATION

- **Material**  
304 Stainless-Steel
- **Rated**  
150 PSI max pressure
- **Fitting Dimensions**  
MSS SP-114

NO-LEAD: The weighted average of the wetted surface of this no-lead product contacted by consumable water contains less than one quarter of one percent (0.25%) lead.



**A.Y. McDonald Mfg. Co.**  
4800 Chavenelle Rd  
Dubuque, IA 52002

**Toll Free: 1-800-292-2737**  
sales@aymcdonald.com  
aymcdonald.com

A.Y. McDonald considers the information on this assembly drawing correct when published. Item and option availability, including specifications, are subject to change without notice.

**Submitted by:**