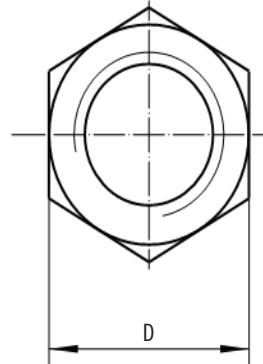
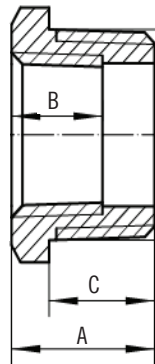


# SUBMITTAL DATA SHEET

## Stainless-Steel Threaded Fitting Hex Reducing Bushing – 2206SS



A.Y. McDonald Mfg. Co. Pipe Fittings are constructed from 304 stainless-steel and are rated for commercial, industrial and residential applications up to 150 PSI. Threads conform to MSS-SP114 standards and specifications.



Part No.	Model No.	Size	Dimensions A	Dimensions B	Dimensions C	Dimensions D	Carton Qty	Weight Per Pcs.	Part No.	Model No.	Size	Dimensions A	Dimensions B	Dimensions C	Dimensions D	Carton Qty	Weight Per Pcs.
4428-149	2206SS	1/4" x 1/8"	.56	.26	.44	.63	250	.03	4428-169	2206SS	1 1/4" x 1"	1.09	.68	.81	1.25	10	.34
4428-150	2206SS	3/8" x 1/8"	.66	.26	.50	.69	150	.06	4428-170	2206SS	1 1/2" x 1/4"	1.12	.40	.81	2	8	.75
4428-151	2206SS	3/8" x 1/4"	.66	.40	.50	.69	150	.04	4428-172	2206SS	1 1/2" x 1/2"	1.12	.53	.81	2	8	.74
4428-152	2206SS	1/2" x 1/8"	.75	.26	.56	.88	80	.11	4428-173	2206SS	1 1/2" x 3/4"	1.12	.55	.81	2	8	.69
4428-153	2206SS	1/2" x 1/4"	.75	.40	.56	.88	80	.10	4428-174	2206SS	1 1/2" x 1"	1.12	.68	.81	2	8	.41
4428-154	2206SS	1/2" x 3/8"	.75	.41	.56	.88	80	.08	4428-175	2206SS	1 1/2" x 1 1/4"	1.12	.71	.81	2	8	.42
4428-155	2206SS	3/4" x 1/8"	.84	.26	.62	1.06	50	.16	4428-176	2206SS	2" x 1/4"	1.22	.40	.88	2.5	5	1.15
4428-156	2206SS	3/4" x 1/4"	.84	.40	.62	1.06	50	.19	4428-178	2206SS	2" x 1/2"	1.22	.53	.88	2.5	5	1.23
4428-157	2206SS	3/4" x 3/8"	.84	.41	.62	1.06	50	.16	4428-179	2206SS	2" x 3/4"	1.22	.55	.88	2.5	5	1.19
4428-158	2206SS	3/4" x 1/2"	.84	.53	.62	1.06	50	.13	4428-180	2206SS	2" x 1"	1.22	.68	.88	2.5	5	.83
4428-160	2206SS	1" x 1/4"	1	.40	.75	1.38	25	.38	4428-181	2206SS	2" x 1 1/4"	1.22	.71	.88	2.5	5	1.07
4428-161	2206SS	1" x 3/8"	1	.41	.75	1.38	25	.35	4428-182	2206SS	2" x 1 1/2"	1.22	.72	.88	2.5	5	.86
4428-162	2206SS	1" x 1/2"	1	.53	.75	1.38	25	.31	4428-187	2206SS	2 1/2" x 1 1/2"	1.44	.72	1.06	3	2	2.00
4428-163	2206SS	1" x 3/4"	1	.55	.75	1.38	25	.23	4428-188	2206SS	2 1/2" x 2"	1.44	.76	1.06	3	10	1.40
4428-165	2206SS	1 1/4" x 1/4"	1.09	.40	.81	1.25	10	.58	4428-189	2206SS	3" x 1"	1.53	.68	1.12	3.5	1	3.27
4428-166	2206SS	1 1/4" x 3/8"	1.09	.41	.81	1.25	10	.57	4428-191	2206SS	3" x 1 1/2"	1.53	.72	1.12	3.5	1	2.00
4428-167	2206SS	1 1/4" x 1/2"	1.09	.53	.81	1.25	10	.56	4428-192	2206SS	3" x 2"	1.53	.76	1.12	3.5	6	3.00
4428-168	2206SS	1 1/4" x 3/4"	1.09	.55	.81	1.25	10	.54	4428-193	2206SS	3" x 2 1/2"	1.53	1.14	1.12	3.5	1	2.41

### SUBMITTAL INFORMATION

- **Material**  
304 Stainless-Steel
- **Rated**  
150 PSI max pressure
- **Fitting Dimensions**  
MSS SP-114

NO-LEAD: The weighted average of the wetted surface of this no-lead product contacted by consumable water contains less than one quarter of one percent (0.25%) lead.



**A.Y. McDonald Mfg. Co.**  
4800 Chavenelle Rd  
Dubuque, IA 52002

**Toll Free: 1-800-292-2737**  
sales@aymcdonald.com  
aymcdonald.com

A.Y. McDonald considers the information on this assembly drawing correct when published. Item and option availability, including specifications, are subject to change without notice.

**Submitted by:**